

SPARES SHOULD BE HELD AS FOLLOWS :—

- Cross Bars.
- Burning Hearth for faeces.
- Burner for oil and water fire.

The authors are indebted to Colonel E. B. Allnutt, M.C., Commandant of the Army School of Hygiene, for permission to send these notes for publication.

REFERENCES.

- [1] A.S.H. FÆCES DESTRUCTOR, *Jnl. Roy. Army Med. Corps*, **78**, No. 5, May, 1942, 209-219.
- [2] PORTABLE ALL-METAL DESTRUCTOR, *Ibid.*, **81**, No. 2, August, 1943, 86-88.

NOTES ON A CAPTURED ITALIAN MOBILE BATH UNIT.

BY MAJOR M. MARKOWE,
Royal Army Medical Corps.

THE Bath Unit is entirely mobile and self-contained, the whole of the apparatus being carried on a three-ton lorry.

The heating apparatus is housed at the rear. The method of heating the water is on the geyser principle, water being fed into the boiler by either current pressure or pumped by means of a semi-rotary hand pump and heated by six burners (kerosene or diesel) of the primus type. Fuel is fed to these burners under pressure which is maintained by a hand pump fitted on the floor of the lorry. Two tanks of approximately five gallons each are fitted for the fuel supply. The change over from one tank to the other is by the simple process of turning a tap.

The remainder of the lorry is fitted with various compartments to house the rest of the equipment during transportation. This equipment is composed of canvas side curtains, semi-rotary pump for water supply, hoses, forms, step ladders and tools, etc.

The body of the lorry is so constructed that the top and sides are doubled so that, when in operation, the outer portion slides back and so forms a shelter extension. The sides are then lifted and supported on specially constructed poles and brackets. Eight sprays each side (sixteen in all) are fitted to the roof of this extension. There are sufficient duckboards to fill the area covered by the sides and roof. Canvas screens are attached to the sides, thereby enclosing the whole unit.

Provided there is a constant flow of cold water to the boiler hot water will be available in a continuous supply. The temperature can be varied by a special mixer valve.

There is also an additional system whereby disinfectants or deodorants may be mixed and fed into the hot water supply.

The whole of the apparatus is one which shows compactness and mobility. It is very simple to operate although complicated at first sight owing to the profusion of different coloured pipes which seem to lead in all directions. This appears to be typical of the Italian engineering technique.

This Mobile Unit compares very favourably with our own type of Mobile Bath Unit which is certainly heavier, more cumbersome and deals, for the equivalent subsection, with only five showers.

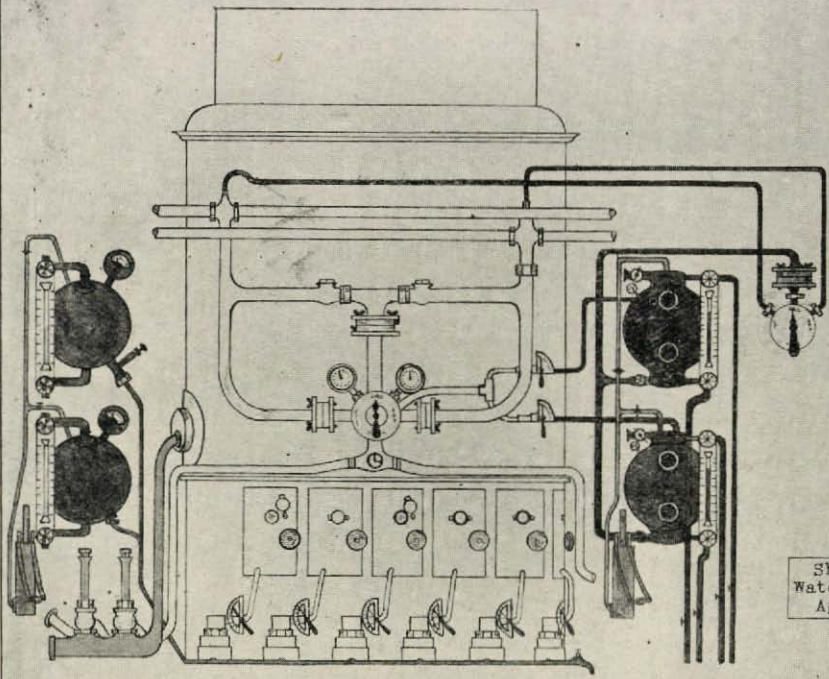
I wish to acknowledge the assistance of the Workshop Staff of this Fd. Hyg. Sec. in experimenting with different designs and Privates T. W. Weldon and F. Baxter, R.A.M.C., for the excellent illustrations. My thanks are due to Colonel R. F. Palmer, A.D.M.S., for permission to forward this article for consideration.

ITALIAN MOBILE BATH

Sheet No. 1.
(To be read in conjunction with Sheet 2).

Eight Shower nozzles, attached to each Side Extension of the sliding Roof.

The whole apparatus is conveyed on a Three-ton Lorry.



Shower, & Water Heating Apparatus.

Stores

Lockers.

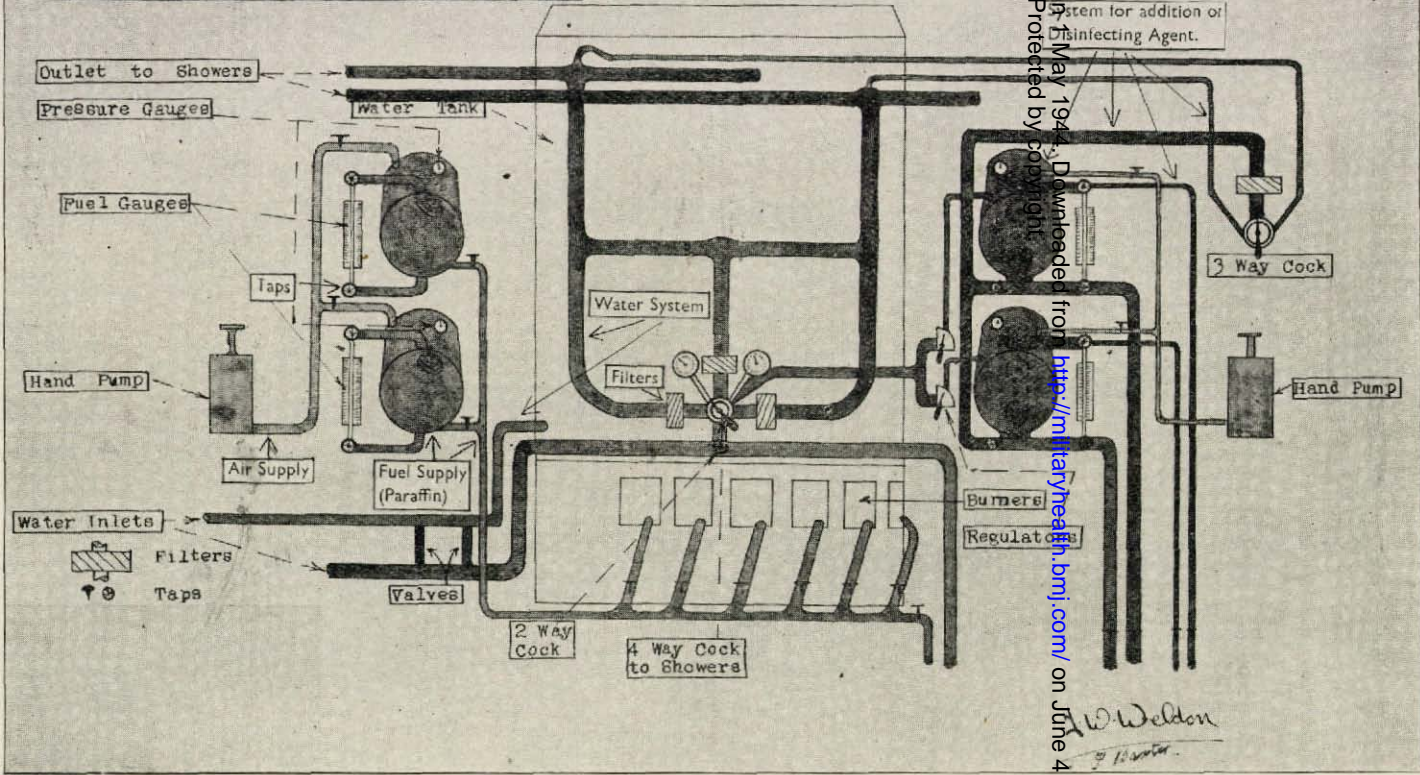
H.W. Wilson

01136/jrunc-82-05-09 on 1 May 1944. Downloaded from <http://militaryhealth.bmj.com/> on June 4, 2023 by guest. Protected by copyright.

ITALIAN MOBILE BATH (DIAGRAMMATICAL)

(DIAGRAMMATICAL)

Sheet No. 2.



0.1136/franc-82-05-09 on 13 May 1944. Downloaded from <http://militaryhealth.bmj.com/> on June 4, 2023 by guest.

A. W. Weldon
9.11.44